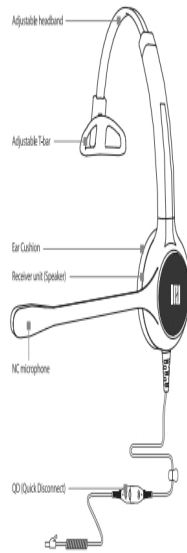


USERS MANUAL IPH-250/255 series



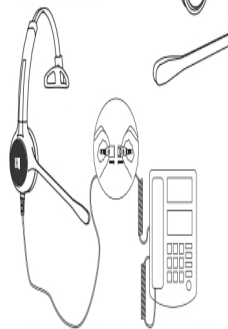
Headset Features



Installation

Connecting Your Headset to your telephone

Check if your telephone has a dedicated headset port. If it does, simply plug in your headset bottom cable at this port. If the headset is not working well, it could be incompatible in configuration matching between your headset and telephone. There are various kinds of bottom cables to match with any kinds of telephones. Check the desk phone brands and model number, and your supplier will help you to give the correct bottom cable for your desk phone.



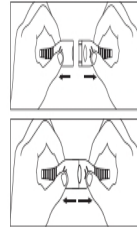
*Notice: Some telephones require an amplifier because of the low microphone sensitivity. Please follow the instructions with your amplifier. Contact your supplier whether amplifier is needed.

USERS MANUAL IPH-250/255 series



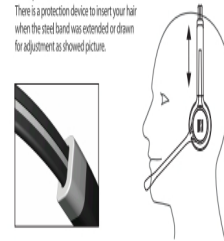
Quick Disconnect

Your headset has a Quick Disconnect allowing you to move away from your desk without removing your headset. You could easily separate and connect this Quick Disconnect by both hands.



Adjusting the Headband

Place your Headset receiver to your ear(s) and set the Ear to the opposite head as showed picture. Adjust the headband until it's very comfortable in less pressure. There is a protection device to insert your hair when the steel band was extended or drawn for adjustment as showed picture.



Adjusting the Microphone

To make best clear sound, the microphone end should be positioned within 2-3cm from your mouth end. The microphone boom can rotate 270 degree for best adjustment.



Safety

This product has a CE and RoHS and FCC approved one for your safety.



IPD Co., LTD
<http://ipdkr.com>

